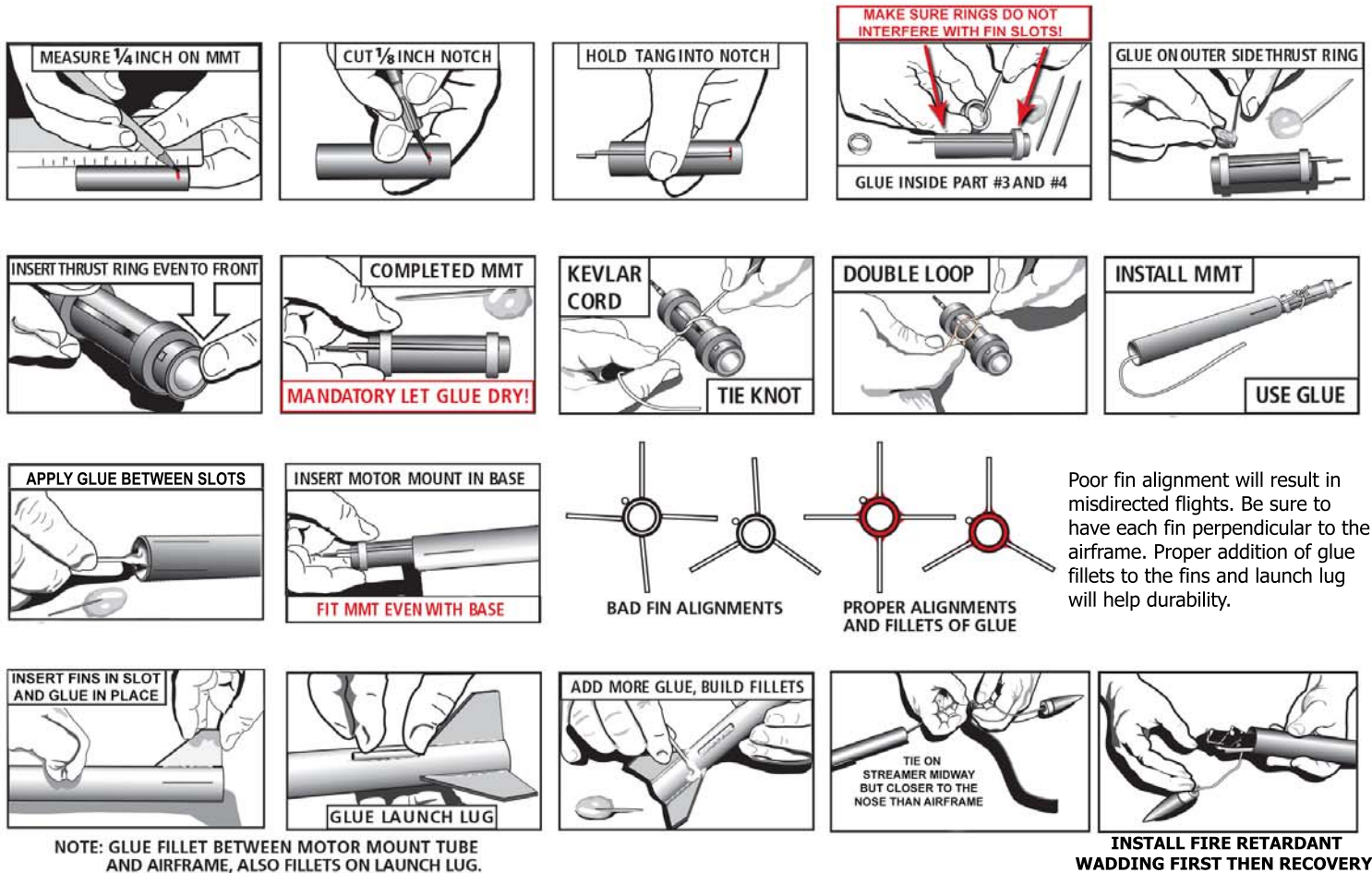
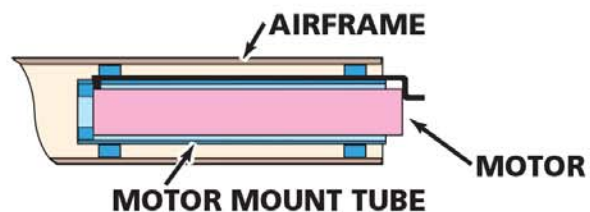


Basic tools suggested: You will need a pencil, toothpicks, glue, scissors or Xacto, steel edged ruler, sandpaper, paint color of your choice.



Follow all of the motor manufacturer's instructions and safety guidelines. Launch instructions and information about launchers are available at the NAR® (National Association of Rocketry) NAR.org or the Tripoli Rocketry Association, Inc. TRIPOLI.org websites. Plans for a Low Cost Rocket Launcher is found on the NAR® website. There are numerous safe launcher plans available Online as well.



Mount the motor snugly behind the spring metal motor mount clip. This kit is designed for a launch rod of 30" minimum length. Follow the instructions provided by the motor manufacturer for safe flying!

A spray primer paint can be applied with sanding between coats. Primer paint will prepare the surfaces for painting with color paint of your choice. The illustration on the front of this card shows a color option common to this rocket. Painting your rocket results in a proper aerodynamic flight with much less drag resistance. Included decals can now be applied to finish your model's appearance. Cut the vinyl decal to your liking and apply. A clear enamel clear coat over the decals also help strengthen the rocket structurally. Read and follow carefully the instructions contained in your motor purchased.